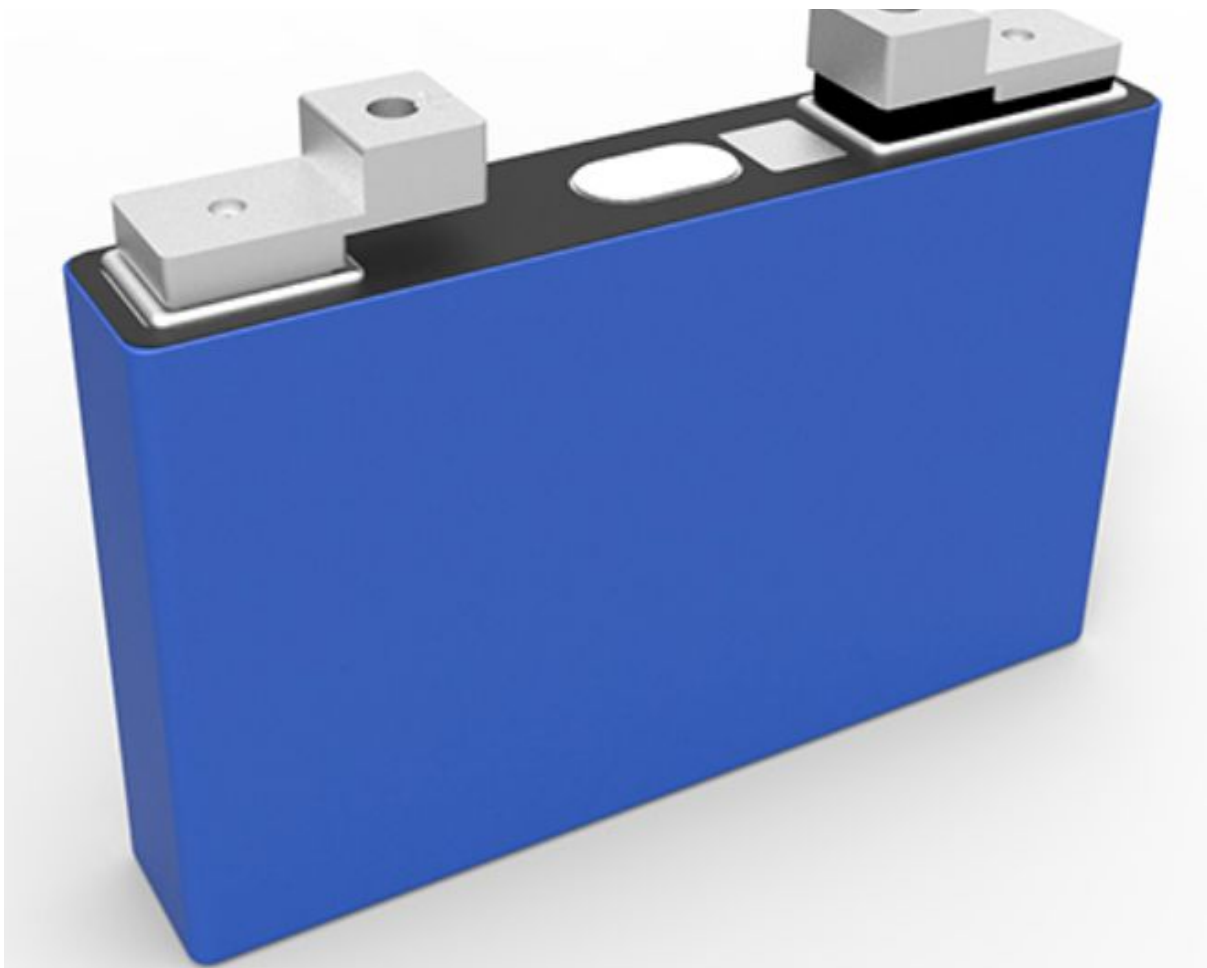


DESCRIPTION C2-NMC53

The ETC batteries, according to their manufacturer, feature a holistic safety concept applied from cell to pack level. They have outstanding calendar/cycle life with maximum reliability. Energy density is continuously improved through application of new materials and lightweight technology. Their modular design and standardized cell format makes them suitable for various applications and ensure an easy upgrade to next generations.

The C2-NMC53 comes comes with screw terminals.



Blue Cars imports and distributes technology for electric mobility, and can assist you with your project through design and engineering services.

TECHNICAL SPECIFICATIONS

Item		Specification
Dimension (LxWxH)	Screw terminal	149 mm x 26.9 mm x 111.8 mm
Weight		0.91±0.1kg
Capacity	Min	53Ah (0.33C) @ 25 °C
Energy	Min	197Wh (0.33C) @ 25 °C
SOC window		10 ~ 100 % (2.8~4.2V)
Terminal type		Screw terminal
Voltage	Max.	4.35 V
	Nominal	3.72 V (0.33C)
	Min.	2.80 V
Energy density	Gravimetric	216Wh/kg
	Volumetric	440Wh/L
Temp. Condition	Operation (Charge)	-15 - 55°C
	Operation (Discharge)	-30 ~ 55°C
	Storage	-30 ~ 55°C
Self-Discharge Rate	Count after fresh cell need Standard Charge to 50%SOC and storage at 25±2°C for 3 month	≤3% / month
Cycle Life	1C/1C, 80% DOD 25 °C	1,500 cycles

